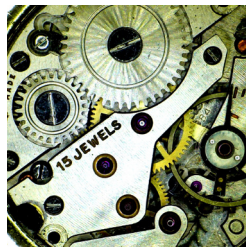
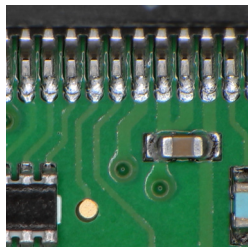


W30x FreeSight HDMI

HD camera with 30x optical zoom, swift auto-focus and extended 500 mm working distance

Versatile, scalable and ergonomic HD imaging system producing bright pictures for fast and reliable optical inspection. The W30x FreeSight has a powerful 30x optical zoom, extended 350 to 500mm working distance range and a swift auto focus for clear examination of your object in Full 1080p High Definition resolution. An extensive range of lenses, illumination, software, mounting and stand configurations allows for installation in all working situations.



Technical Specification

- Image Sensor ○ 1/2.5" CMOS, ~ 2.2 mega pixels
- Picture Quality ○ Full HD
- Output Signal ○ 1080p/60, 1080p/59.94, 1080p/50, 1080p/30, 1080p/29.97, 1080p/25, 1080i/60, 1080i/59.94, 1080i/50, 1080i/30, 1080i/29.97, 1080i/25, 720p/60, 720p/59.94, 720p/50, 720p/30, 720p/29.97, 720p/25

- Optics ○ 30x optical zoom with auto focus, F1.6 to F14 (F4.7 to F14 at 30x)

- Working Distance (w/o Close-up) ○ ~ 350 - 500 mm
- Working Distance with +2 Close-up ○ ~ 210 - 245 mm
- Working Distance with +5 Close-up ○ ~ 125 - 140 mm
- Working Distance with +10 Close-up ○ ~ 73 - 80 mm

- Field of View at 1x zoom ○ ~ 550 x 309 mm (~ 0.9x magnification on 24" monitor)
- Field of View at 10x zoom ○ ~ 56 x 31.5 mm (~ 9.3x magnification on 24" monitor)
- Field of View at 30x zoom ○ ~ 18.5 x 10.4 mm (~ 28x magnification on 24" monitor)
- Field of View at 30x zoom +2 Close-up ○ ~ 9.2 x 5.2 mm (~ 57x magnification on 24" monitor)
- Field of View at 30x zoom +5 Close-up ○ ~ 6.9 x 3.9 mm (~ 75x magnification on 24" monitor)
- Field of View at 30x zoom +10 Close-up ○ ~ 4.4 x 2.5 mm (~ 118x magnification on 24" monitor)

- Camera Control ○ Aluminum housing Control unit device with Joystick or PC Control Software via serial COM or USB port

- Adjustable Parameters ○ Optical zoom, iris, exposure (shutter speed), brightness, focus, white balance (colour), picture freeze, NIR-vision mode, image rotate, negative picture, save & recall, zoom factor display and cross line on live image.

- Laser Pointer ○ Red LED laser, 0,5mW output power, Laser Class 2

- Inputs ○ DC in and Serial RS-232 (via circular connector or 5-pin MiniDin DB9-F and COM-USB adapter)

- Outputs ○ HDMI 1.4b

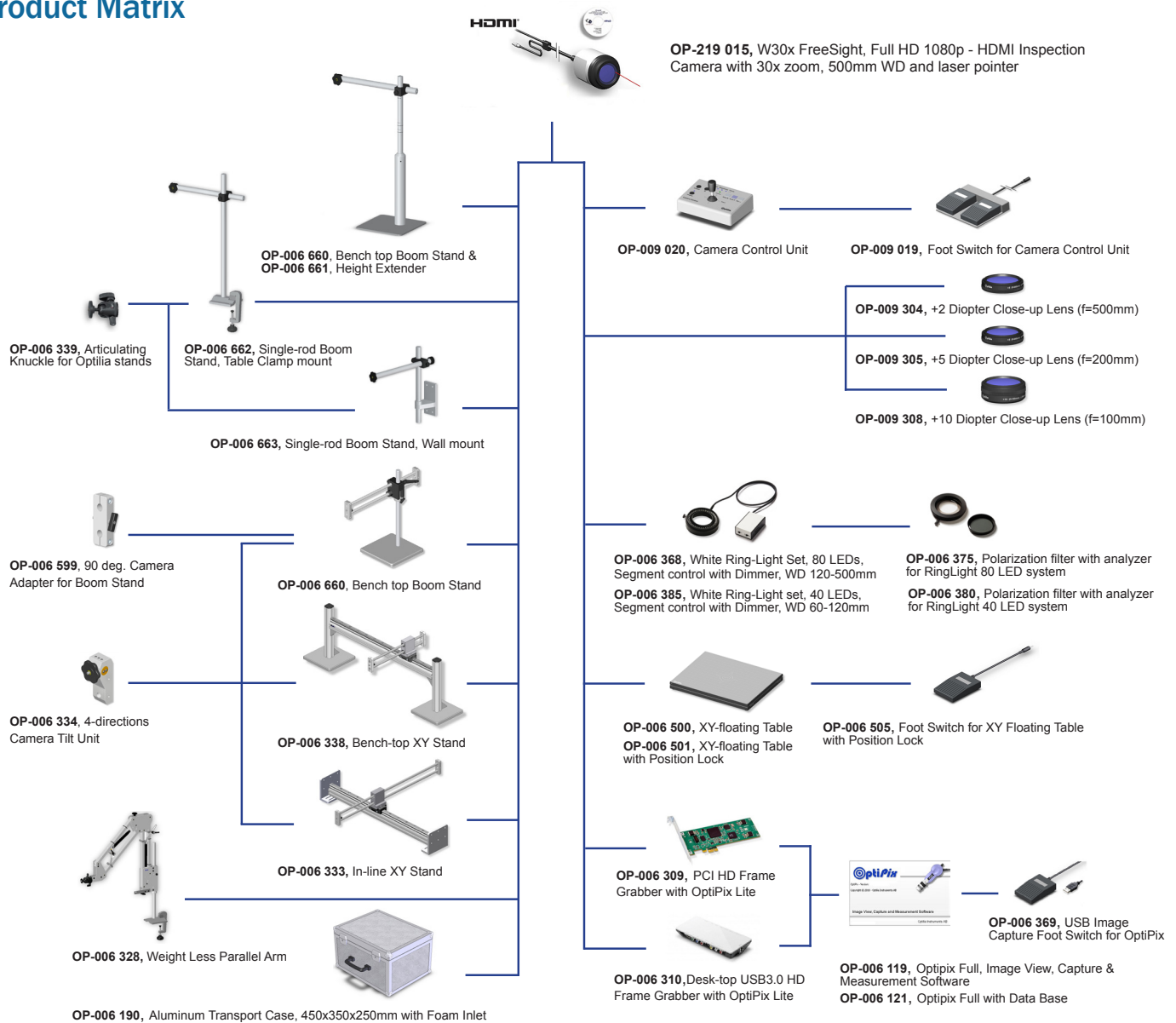
- Storage Environment ○ -20° - +60°C, 20 - 95% RH, non-condensing
- Operating Environment ○ -5 ° - +60°C, 20 - 95% RH, non-condensing
- Power Requirement ○ 12.0 VDC, 4.0 W max
- Weight of camera ○ 950 g. max (without stand and control unit)

- Model Options ○ W30x-HD FreeSight (Standard)
- W30x-HD-E FreeSight (ESD-protected)
- W30x-HD-M FreeSight (Medical housing)



W30x FreeSight HDMI

Product Matrix



Dimensions

