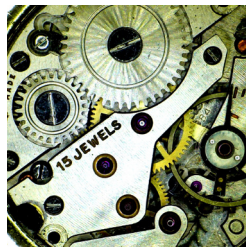
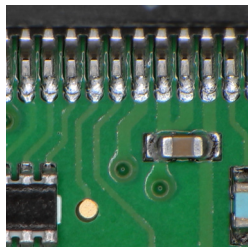


M30x FreeSight HDMI

High definition inspection camera with 30x optical zoom and fast auto-focus

Cost effective and ergonomic video inspection system producing bright pictures for fast and reliable optical inspection. The M30x FreeSight has a powerful 30x optical zoom, 350 to 490mm working distance range and a swift auto focus for clear examination of your object in 720p or optional 1080p High Definition. An extensive range of lenses, illumination, software, mounting and stand configurations allows for versatile installation in all working situations.



Technical Specification

- Image Sensor ○ 1/2.5" CMOS, ~ 2.2 mega pixels
- Picture Quality ○ Full HD
- Output Signal ○ 1080p/60, 1080p/59.94, 1080p/50, 1080p/30, 1080p/29.97, 1080p/25, 1080i/60, 1080i/59.94, 1080i/50, 720p/60, 720p/59.94, 720p/50, 720p/30, 720p/29.97, 720p/25

- Optics ○ 30x optical zoom with auto focus, F1.6 to F14 (F4.7 to F14 at 30x)

- Working Distance (w/o Close-up) ○ ~ 350 - 490 mm
- Working Distance with +2 Close-up ○ ~ 210 - 240 mm
- Working Distance with +5 Close-up ○ ~ 125 - 135 mm
- Working Distance with +10 Close-up ○ ~ 65 - 73 mm

- Field of View at 1x zoom ○ ~ 522 x 293 mm (~ 1x magnification on 24" monitor)
- Field of View at 10x zoom ○ ~ 52 x 29 mm (~ 10x magnification on 24" monitor)
- Field of View at 20x zoom ○ ~ 26 x 14.8 mm (~ 20x magnification on 24" monitor)
- Field of View at 30x zoom ○ ~ 17 x 9.6 mm (~ 30x magnification on 24" monitor)
- Field of View at 30x zoom +2 Close-up ○ ~ 8.6 x 4.8 mm (~ 60x magnification on 24" monitor)
- Field of View at 30x zoom +5 Close-up ○ ~ 5 x 2.8 mm (~ 100x magnification on 24" monitor)
- Field of View at 30x zoom +10 Close-up ○ ~ 3 x 1.7 mm (~ 170x magnification on 24" monitor)

- Camera Control ○ Aluminum housing Control unit with function buttons

- Adjustable parameters ○ Optical zoom, brightness, focus, picture freeze, zoom factor display, setup Save & Recall

- Inputs ○ DC in (5-pin MiniDin)
- outputs ○ HDMI 1.4b

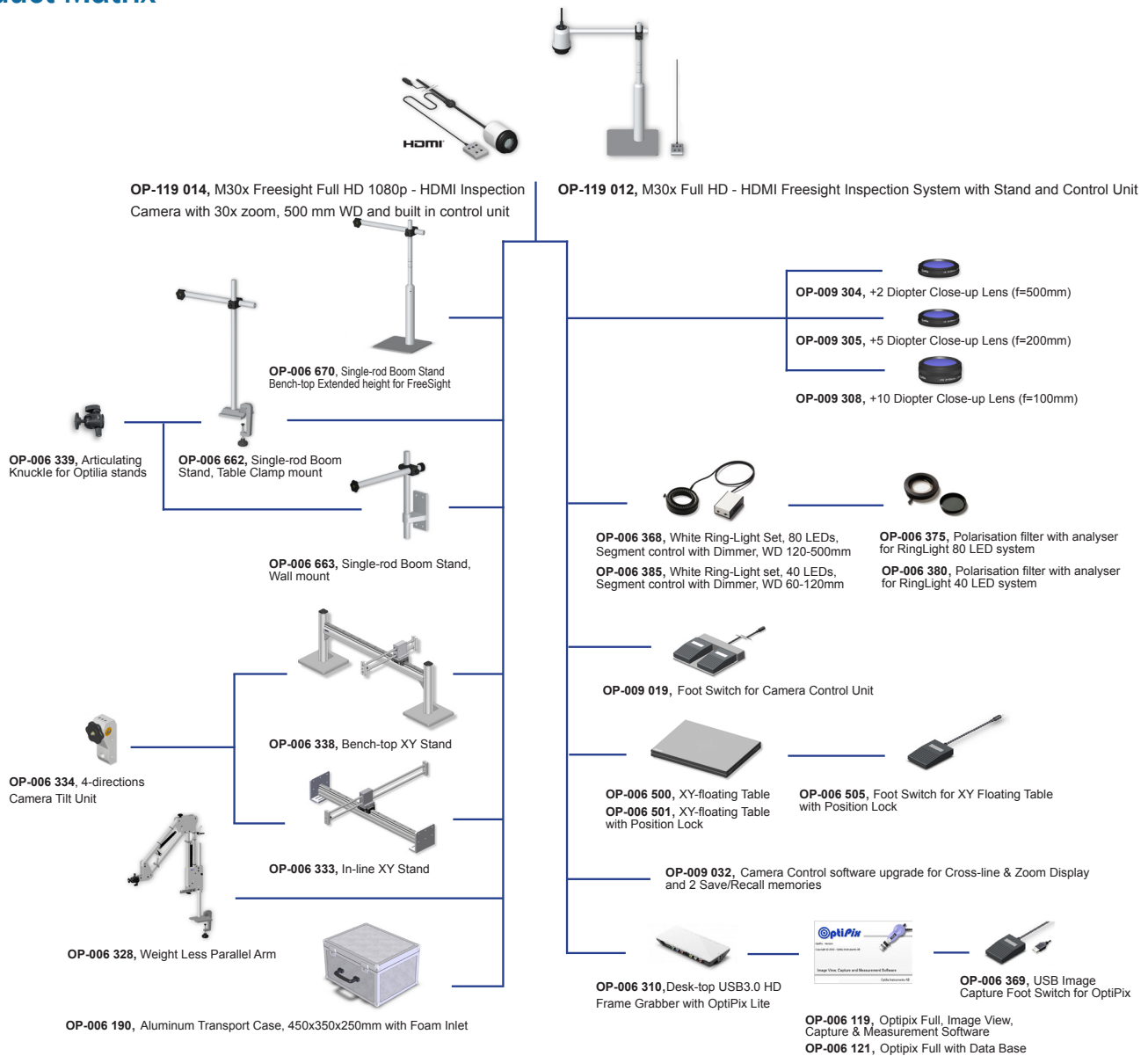
- Storage Environment ○ -20° - +60°C, 20 - 95% RH, non-condensing
- Operating Environment ○ -5° - +60°C, 20 - 95% RH, non-condensing
- Power Requirement ○ 12.0 VDC, 4.0 W max
- Weight of camera ○ 710 g. max (without control unit). 970 g. max (with control unit)
- Weight of Bench-top Stand with height extender ○ 3400 g. max

- Model options ○ M30x-HD FreeSight (720, 60p Standard HD video)
 - * -F 1080, 60p Full HD video
 - * -E ESD-protected
 - * -L With laser pointer
 - * -M Medical housing



M30x FreeSight HDMI

Product Matrix



Dimensions

