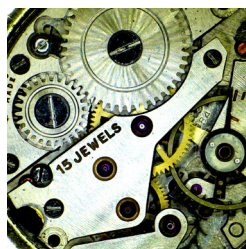
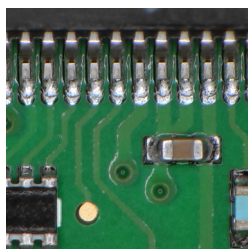


M30x-HD *EasyView*

High definition inspection camera with 30x optical zoom and fast auto-focus

Cost effective, plug-and-play and ergonomic video inspection system producing bright pictures for fast and reliable optical inspection. The M30x has a powerful 30x optical zoom, 60mm to 240mm working distance range and a swift auto focus for clear examination of your object in 720p or optional 1080p High Definition. An extensive range of lenses, illumination, software, mounting and stand configurations allows for versatile installation in all working situations.



Technical Specification

Image Sensor ○ 1/4" CMOS, ~ 1.4 mega pixels

Picture Quality ○ HD 720p (1280x720)

Output Signal ○ 720p/60, 720p/50

Optics ○ 30x optical zoom with auto focus, F1.6 to F14 (F4.7 to F14 at 30x)

Working Distance (w/o Close-up) ○ ~ 210 - 240 mm

Working Distance with +2 Close-up ○ ~ 145 - 160 mm

Working Distance with +5 Close-up ○ ~ 95 - 110 mm

Working Distance with +10 Close-up ○ ~ 60 - 70 mm

Field of View at 1x zoom ○ ~ 256 x 145 mm (~ 2x magnification on 24" monitor)

Field of View at 10x zoom ○ ~ 25.6 x 14.5 mm (~ 20x magnification on 24" monitor)

Field of View at 20x zoom ○ ~ 12.8 x 7.2 mm (~ 40x magnification on 24" monitor)

Field of View at 30x zoom ○ ~ 8.5 x 4.8 mm (~ 60x magnification on 24" monitor)

Field of View at 30x zoom +2 Close-up ○ ~ 5.7 x 3.2 mm (~ 91x magnification on 24" monitor)

Field of View at 30x zoom +5 Close-up ○ ~ 3.9 x 2.2 mm (~ 133x magnification on 24" monitor)

Field of View at 30x zoom +10 Close-up ○ ~ 2.6 x 1.45 mm (~ 200x magnification on 24" monitor)

Camera Control ○ Aluminum housing Control unit with function buttons

Adjustable parameters ○ Optical zoom, brightness, focus, picture freeze, zoom factor display, setup Save & Recall

Inputs ○ DC in (5-pin MiniDin)

outputs ○ HD Component Y/Pb/Pr Video out (3xRCA), External foot pedal (stereo jack)

Storage Environment ○ -20° - +60°C, 20 - 95% RH, non-condensing

Operating Environment ○ -5° - +60°C, 20 - 95% RH, non-condensing

Power Requirement ○ 12.0 VDC, 4.0 W max

Weight of camera ○ 710 g. max (without control unit). 970 g. max (with control unit)

Weight of Bench-top Boom Stand ○ 2300 g. max

Model options ○ M30x-HD EasyView (720, 60p Standard HD video)

* -F 1080, 60p Full HD video

* -E ESD-protected

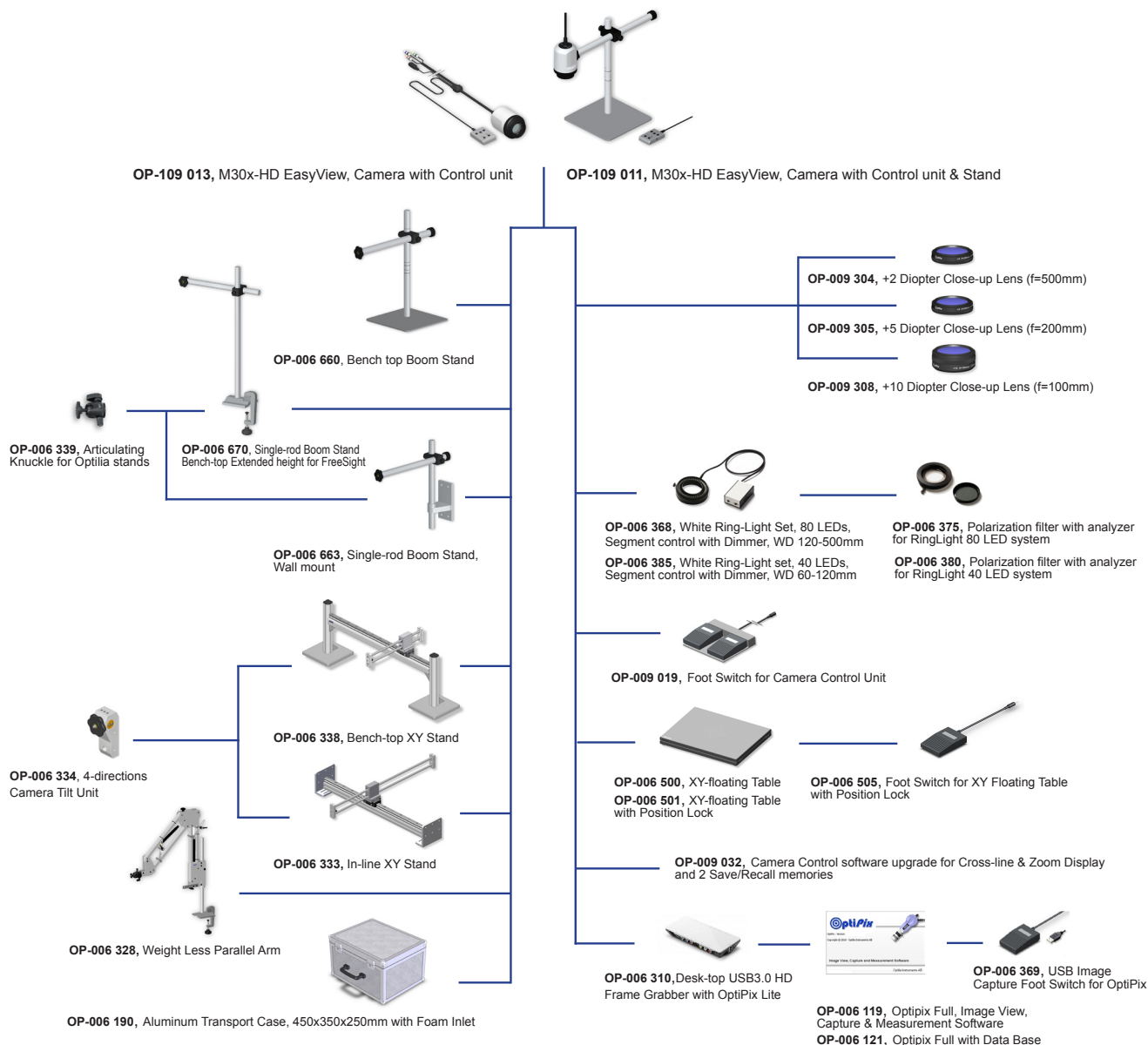
* -L With laser pointer

* -M Medical housing



M30x-HD *EasyView*

Product Matrix



Dimensions

